

# SNC-EMX52R

Minidome outdoor 5 MP camera with Exmor R sensor, 3-10mm Easy Focus/ Easy Zoom lens and enhanced WDR capability

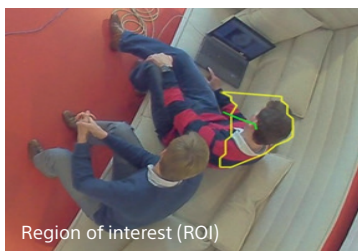
# SONY

- Superior 5MP image at 30 fps with Easy Focus/ Easy Zoom capability (possible to downscale to 1.3MP)
- Wide Dynamic Range
- Essential Video Analytics – detect, track and analyze objects, providing alerts in response to predefined alarm rules
- Latest Data Security Technology including Trusted Platform Module
- Intelligent bitrate management techniques and Intelligent Dynamic Noise Reduction combined with H.265 video compression
- IK10 rated vandal-resistant and IP66 rated weather-resistant
- True Day/ Night
- Built-in infrared illuminator with 30 m (98 ft) viewing distance



## KEY FEATURES

- Ideal for outdoor use, the IP66 / IK10 rated design is suitable for installations where vandal resistance is important. The pan/tilt/rotation mechanism allows installers to select the exact field of view. With Easy Focus/ Easy Zoom the zoom can be changed without opening the camera, using the automatic lens wizard. This makes it easy for an installer to accurately zoom and focus the camera for both day and night operation.
- This 5MP camera has Wide Dynamic Range. The multiple-exposure process dramatically improves the visibility of images in an extreme high-contrast environment.
- Built-in Essential Video Analytics allow the camera to reliably detect, track and analyze objects, providing alerts in response to predefined alarm rules.



With latest Essential Video Analytics (EVA)

- The low-noise image and the efficient H.265 compression technology provide clear images while reducing bandwidth and storage by up to 80% compared to standard H.264 cameras.
- Data Security – The on-board Trusted Platform Module (TPM) and Public Key Infrastructure (PKI) support, guarantee superior protection from malicious attacks. The 802.1x network authentication with EAP/TLS, supports TLS 1.2 with updated cipher suites including AES 256 encryption.
- The integrated gyro/accelerometer sensor automatically corrects the image orientation in steps of 90° if the camera is mounted at right angles or upside down.
- True Day/Night switching – The camera incorporates mechanical filter technology for vivid daytime color and exceptional night-time imaging while maintaining sharp focus under all lighting conditions.
- Edge Recording – The MicroSD card slot supports up to 2 TB of storage capacity and can be used for local alarm recording.
- The camera conforms to ONVIF Profiles S, T and G, which guarantees interoperability between network video products regardless of manufacturer.

Sony Video Security driven by Bosch



## Technical specifications

Power	
Power Supply	+12 VDC $\pm 5\%$ , 24 VAC $\pm 10\%$ or PoE (48 VDC nominal)
Power Consumption	10.8 W max.
PoE	IEEE 802.3af (802.3 at Type 1) Power level: Class 3
Sensor	
Type	1/2.9-inch Exmor R CMOS
Effective pixels	3072 (H) x 1944 (V)
Video performance – Minimum Illumination	
(F1.3, AGC On, 1/25 s, 30 fps, 30 IRE)	
Color	0.24 lx
B/W	0.03 lx
IR LED on	0.0 lx
Video performance – Dynamic range	
Wide Dynamic Range	107 dB (measured according IEC 62676 Part 5)
Video streaming	
Video compression	H.265; H.264; M-JPEG
Streaming	Multiple configurable streams in H.264 or H.265 and M-JPEG, configurable frame rate and bandwidth
Encoding regions/ Regions of Interest (ROI)	Up to 8 areas with encoder quality settings per area
Video resolution (H x V)	
Maximum Video resolution	5MP (16:9) 3072 x 1728
Video functions	
Day/Night	Color, Monochrome, Auto (adjustable switch points)
Adjustable picture settings	Contrast, Saturation, Brightness
White Balance	2500 to 10000K, 4 automatic modes (Basic, Standard, Sodium vapor, Dominant color), Manual mode and Hold mode
Shutter	Automatic Electronic Shutter (AES); Fixed (1/25[30] to 1/15000) selectable; Default shutter
Backlight compensation	On / off / Intelligent Auto Exposure (BLC)
Noise reduction	Intelligent Dynamic Noise Reduction with separate temporal and spatial adjustments
Sharpness	Sharpness enhancement level selectable
Intelligent defog	Intelligent Defog automatically adjusts parameters for best picture in foggy or misty scenes (switchable)
Privacy Masking	Eight independent areas, fully programmable
Video Analytics	Essential Video Analytics
Other functions	Image mirror, Image flip, Pixel counter, Video watermarking, Display stamping, Location
Camera rotation	Automatic detection with manual override (0° / 90° / 180° / 270°)
Optical	
Lens type	3 to 10 mm Easy Focus/ Easy Zoom lens, IR corrected DC Iris F1.3 - 360
Lens mount	Board mounted
Adjustment	Motorized zoom/focus
Iris control	Automatic iris control
Day/Night	Switched mechanical IR filter
Horizontal field of view	29° - 92°
Vertical field of view	18° - 50°
Night vision (IR version only)	
Distance	30 m (98 ft)
LED	10 LED high efficiency array, 850 nm
IR intensity	Adjustable
Audio	
Audio line in	0.707 Vrms max, 10 kOhm typical, jack connector
Audio line out	0.707 Vrms max, 16 kOhm typical, jack connector
Audio streaming	Standard G.711, 8 kHz sampling rate L16, 16 kHz sampling rate AAC-LC, 48 kbps at 16 kHz sampling rate AAC-LC, 80 kbps at 16 kHz sampling rate
Signal-to-Noise Ratio	>50 dB
Audio Streaming	Full-duplex / half duplex
Local storage	
Internal RAM	60 s pre-alarm recording
Memory card slot	Supports up to 32 GB microSDHC / 2 TB microSDXC card. (A memory card of Class 6 or higher is recommended for HD recording)
Recording	Continuous recording, ring recording, alarm / events / schedule recording

Software	
Unit discovery	SNC Toolbox
Unit configuration	Via web browser or SNC Toolbox
Firmware update	Remotely programmable
Software viewing	Web browser or third party software
Latest firmware and software	pro.sony/support/software
Network	
Protocols	IPv4, IPv6, UDP, TCP, HTTP, HTTPS, RTP / RTCP, IGMP V2/V3, ICMP, ICMPv6, RTSP, FTP, ARP, DHCP, APIPA (Auto-IP, link local address), NTP (SNTP), SNMP (V1, V3, MIB-II), 802.1x, DNS, DNSv6, SMTP, UPnP (SSDP), DiffServ (QoS), LLDP, SOAP, Dropbox™, CHAP, digest authentication
Encryption	TLS1.0/1.2, AES128, AES256
Ethernet	10/100 Base-T, auto-sensing, half/full duplex
Connectivity	Auto-MDIX
Interoperability	ONVIF Profile S; ONVIF Profile G; ONVIF Profile T; GB/T 28181
Mechanical	
3-axis adjustment (pan/tilt/rotation)	350° / 130° / 330°
Dimensions (Ø x H)	165 x 128 mm (6.50 x 5.04 in)
Weight	1500 g (3.31 lb)
Environmental	
Operating temperature	-40 °C to +50 °C (-40 °F to +122 °F) for continuous operation; -34 °C to +74 °C (-30 °F to +165 °F) according to NEMA TS 2-2003 (R2008), para 2.1.5.1 using fig. 2.1 test profile
Storage temperature	-40 °C to +70 °C (-40 °F to +158 °F)
Humidity	5% to 93% relative humidity (non condensing), 5% to 100% RH condensing
Ingress protection	IP66
Vandal resistance	IK10
Accessories	
Pendant Adapter	UNI-MDPDH180
Wall bracket adapter	UNI-MDB3, UNI-MDW1/T
Gooseneck wall bracket	UNI-WMB4
Conduit box	UNI-WMBB1, UNI-MDPBKBOX1/T
Pole mount	UNI-PMA1, UNI-PMA2D/T
In-ceiling mount	YT-ICB600
Back box with optional pole mount	UNI-BBB2

## DIMENSIONS

